

ORDINANCE 8-2021

An Ordinance to Amend the Village of Holmen Comprehensive Plan 2016-2036.

WHEREAS, the Village Holmen Planning Commission has found it necessary to make certain amendments to the Village of Holmen's Comprehensive Plan 2016-2036, adopted on March 10, 2016; and

WHEREAS, those amendments include amending the Future Land Use Map designations for parcels 8-1229-1, 14-4615-0, 14-4614-0, 8-407-0, and 8-408-0 from Medium-Density Residential to Mixed Use – Residential/Commercial, and for Parcels 8-1226-0, 8-409-5, 8-409-2, 8-409-3, 8-409-0, 8-417-0, and 8-418-0 from Medium-Density Residential to High-Density Residential; and

WHEREAS, prior to taking action on this resolution the Planning Commission held a public hearing on July 27, 2021, preceded by a Class One notice a minimum of 30 days before the hearing; and

WHEREAS, after said public hearing, and recommendation by the Planning Commission, the Village Board will decide whether to adopt by ordinance the Comprehensive Plan amendments; and

WHEREAS, the Comprehensive Plan may be used as the basis for, among other things, official mapping, local subdivision regulations, general zoning ordinances, shoreland/wetland zoning, and as a guide for approving or disapproving actions affecting growth, development, conservation, and recreation within the jurisdiction of the Village of Holmen and its extraterritorial plat review area; and

WHEREAS, this Comprehensive Plan 2016-2036 may from time to time be further amended, extended, or added to in greater detail.

NOW, THEREFORE, BE IT RESOLVED, that the Village of Holmen Planning Commission recommends amendment of said Village of Holmen Comprehensive Plan 2016-2036 by the Village Board for adoption by ordinance.

Adopted this 12th day of August, 2021

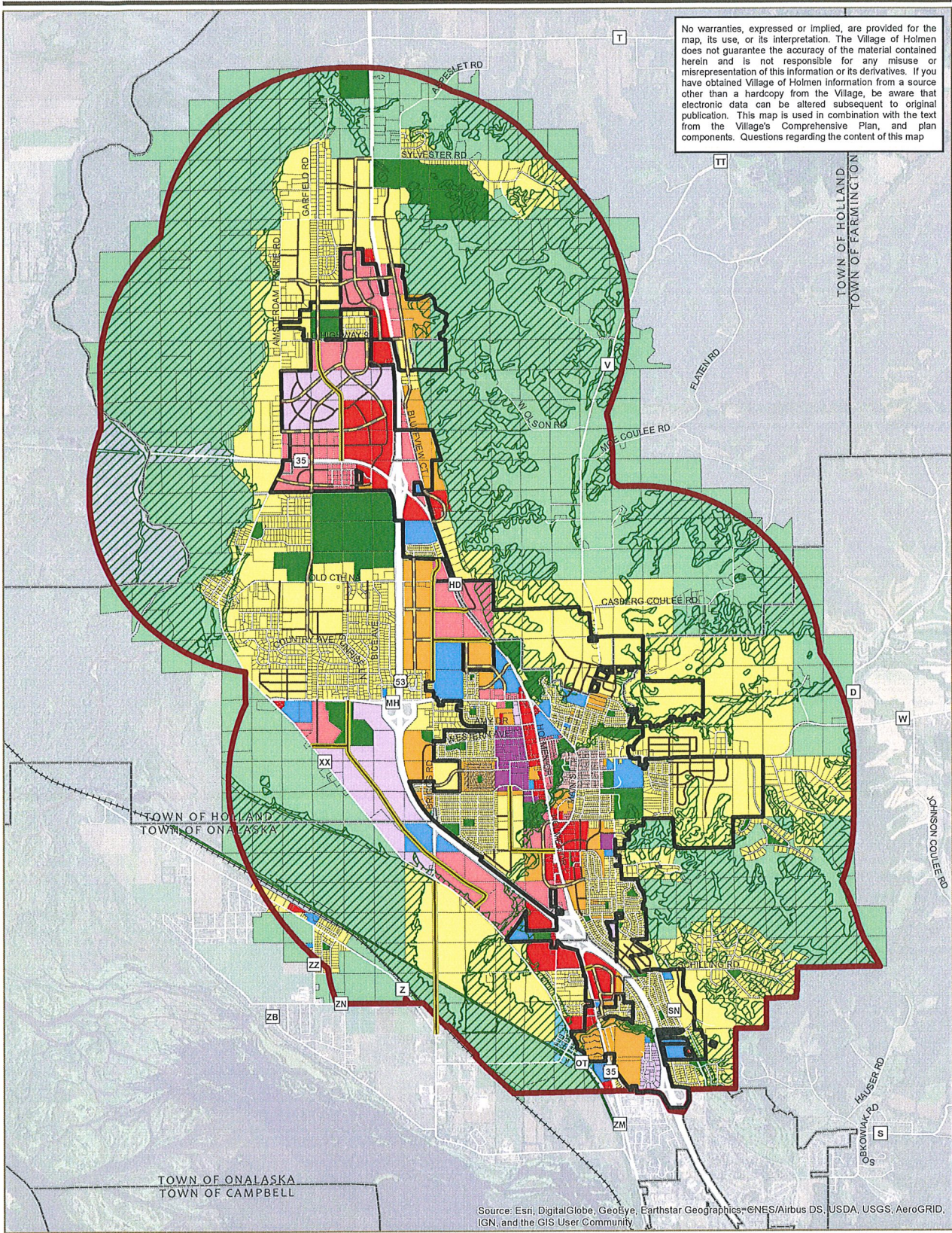
Village President: Patrick J. Barlow Patrick Barlow

(Published/Posted): 8/27/2021

(Approved, Vetoed): 7-0

Attest, Village Clerk: Angela Hornberg Angela Hornberg

No warranties, expressed or implied, are provided for the map, its use, or its interpretation. The Village of Holmen does not guarantee the accuracy of the material contained herein and is not responsible for any misuse or misrepresentation of this information or its derivatives. If you have obtained Village of Holmen information from a source other than a hardcopy from the Village, be aware that electronic data can be altered subsequent to original publication. This map is used in combination with the text from the Village's Comprehensive Plan, and plan components. Questions regarding the content of this map



Source: Esri, DigitalGlobe, GeoEye, Earthstar Geographics, CNES/Airbus DS, USDA, USGS, AeroGRID, IGN, and the GIS User Community

FUTURE LAND USE (PLANNING AREA)

<ul style="list-style-type: none"> Planning Area Village of Holmen Town Boundary Railroad 	<p>Future Land Use</p> <ul style="list-style-type: none"> Rural Lands (Low Density Residential) Medium Density Residential High Density Residential Mixed Use - Rural Hamlet Mixed Use - Residential/Commercial 	<ul style="list-style-type: none"> Mixed Use - Downtown Mixed Use - Commercial/Light Industrial Commercial Manufacturing Parks, Recreation and Conservancy Government and Institutional 	<ul style="list-style-type: none"> Natural Resource Protection Waterbody <div style="text-align: right; margin-top: 10px;"> <p>0.0 0.1875 0.375 0.75 Miles</p> </div>
---	---	---	--

**RESOLUTION (PC) 6-2021
VILLAGE OF HOLMEN PLANNING COMMISSION
COMPREHENSIVE PLAN AMENDMENT**

WHEREAS, the Village of Holmen Planning Commission has found it necessary to make certain amendments to the Village of Holmen's Comprehensive Plan 2016-2036, adopted on March 10, 2016; and

WHEREAS, those amendments include amending the Future Land Use Map designations for parcels 8-1229-1, 14-4615-0, 14-4614-0, 8-407-0, and 8-408-0 from Medium-Density Residential to Mixed Use – Residential/Commercial, and for Parcels 8-1226-0, 8-409-5, 8-409-2, 8-409-3, 8-409-0, 8-417-0, and 8-418-0 from Medium-Density Residential to High-Density Residential.

WHEREAS, these amendments will allow for flexibility and preferred future development of said lands to further the long-term community vision in the Village of Holmen's Comprehensive Plan 2016-2036.

WHEREAS, prior to taking action on this resolution the Planning Commission held a public hearing on July 27, 2021, preceded by a Class One notice a minimum of 30 days before the hearing; and

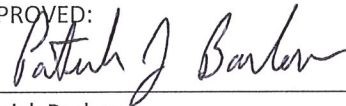
WHEREAS, after said public hearing, and recommendation by the Planning Commission, the Village Board will decide whether to adopt by ordinance the Comprehensive Plan amendments; and

WHEREAS, the Comprehensive Plan may be used as the basis for, among other things, official mapping, local subdivision regulations, general zoning ordinances, shoreland/wetland zoning, and as a guide for approving or disapproving actions affecting growth, development, conservation, and recreation within the jurisdiction of the Village of Holmen and its extraterritorial plat review area; and

WHEREAS, this Comprehensive Plan 2016-2036 may from time to time be further amended, extended, or added to in greater detail.

NOW, THEREFORE, BE IT RESOLVED, that the Village of Holmen Planning Commission recommends amendment of said Village of Holmen Comprehensive Plan 2016-2036 by the Village Board for adoption by ordinance.

APPROVED:



Patrick Barlow
Planning Commission Chair

ATTEST:



Scott A. Heinig
Holmen Village Administrator