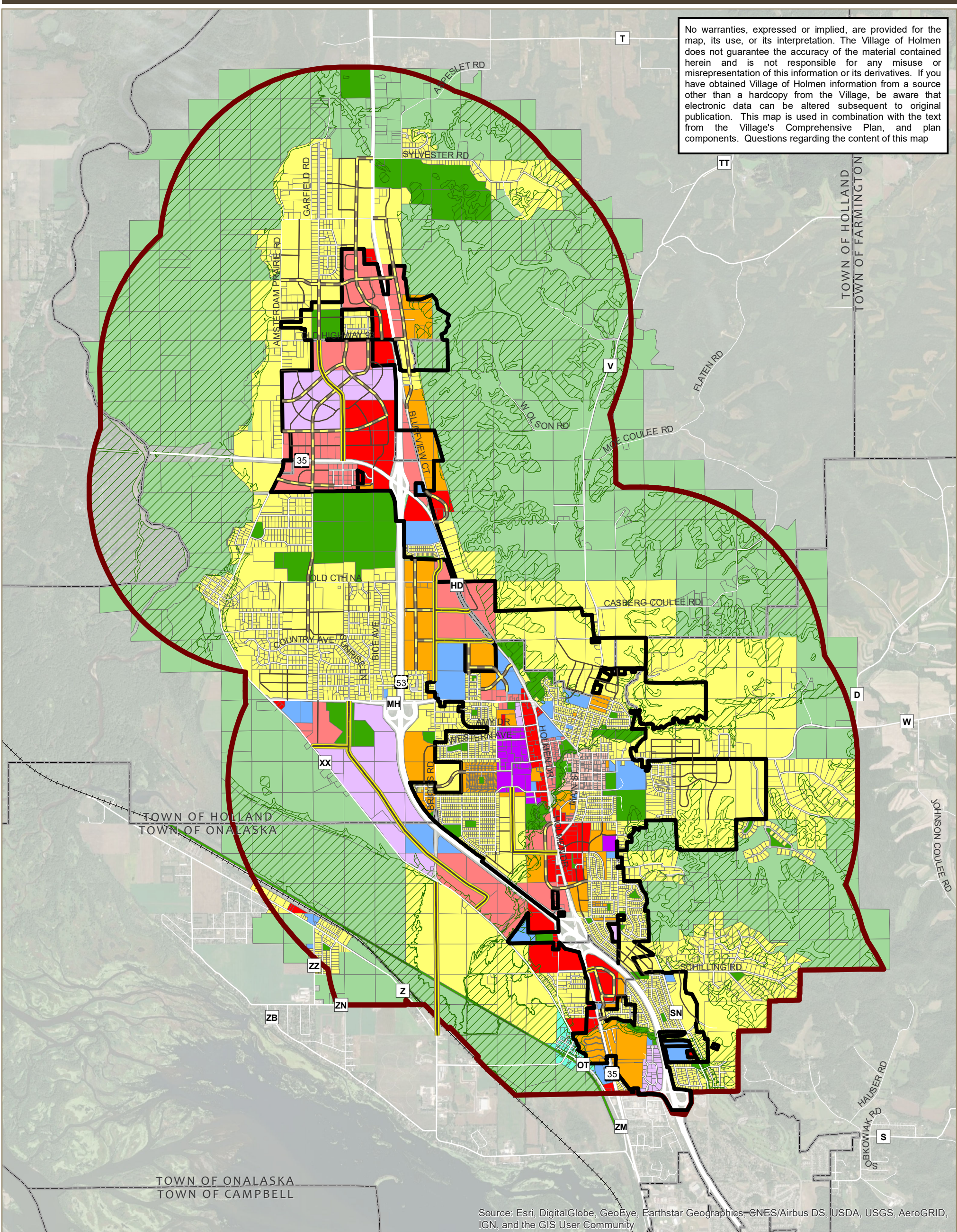


No warranties, expressed or implied, are provided for the map, its use, or its interpretation. The Village of Holmen does not guarantee the accuracy of the material contained herein and is not responsible for any misuse or misrepresentation of this information or its derivatives. If you have obtained Village of Holmen information from a source other than a hardcopy from the Village, be aware that electronic data can be altered subsequent to original publication. This map is used in combination with the text from the Village's Comprehensive Plan, and plan components. Questions regarding the content of this map



Source: Esri, DigitalGlobe, GeoEye, Earthstar Geographics, CNES/Airbus DS, USDA, USGS, AeroGRID, IGN, and the GIS User Community

FUTURE LAND USE (PLANNING AREA)

<ul style="list-style-type: none"> Planning Area Village of Holmen Town Boundary Railroad 	<p>Future Land Use</p> <ul style="list-style-type: none"> Rural Lands (Low Density Residential) Medium Density Residential High Density Residential Mixed Use - Rural Hamlet Mixed Use - Residential/Commercial 	<ul style="list-style-type: none"> Mixed Use - Downtown Mixed Use - Commercial/Light Industrial Commercial Manufacturing Parks, Recreation and Conservancy Government and Institutional 	<ul style="list-style-type: none"> Natural Resource Protection Waterbody